

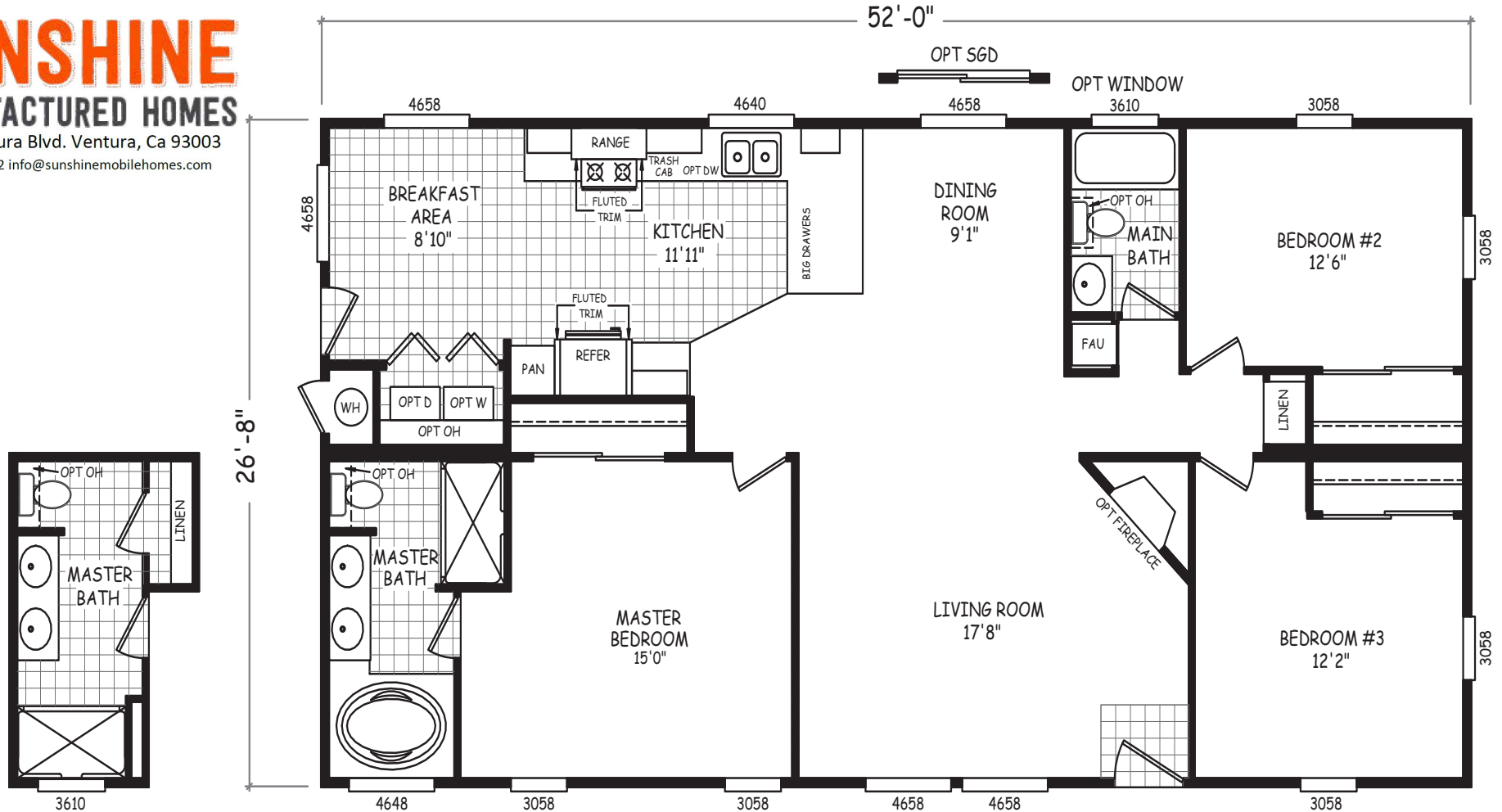


Desert Edge Series
Model: DE-28523A
3 Bedrooms | 2 Bathrooms | 1387 Square Feet

built by:
CavcoWest

SUNSHINE MANUFACTURED HOMES

6635 Ventura Blvd. Ventura, Ca 93003
805-477-0022 info@sunshinemobilehomes.com



ALT MASTER BATH

MODEL: DE-28523A

APPROXIMATELY 1387 SQ FT
3 BEDROOM, 2 BATH

Construction Features

- Vapor Barrier Between Frame System and Subfloor
- Sealed Floor Duct System and Water Lines, Installed Inside R-22 Rated Fiberglass Blanket Insulation Under Subfloor
- 5/8 Inch OSB Floor Decking
- 2" x 6" Subfloor Construction With Joists Spaced 16" On Center (2x8 on 32 Wide Models)
- Shut-Off Valves On All Water Fixtures
- 2" x 4" Exterior Wall Construction With Studs Spaced 16" On Center and R-11 Rated Fiberglass Insulation
- 93" Exterior Sidewall Height and elevated 4/12 roof pitch
- 100 Amp Electric Service With Copper Wiring and Interior Panel Box
- Gas auto ignition Furnace With Toe Kick Air Registers in Kitchen and Baths (N/A some locations)
- 40 Gallon Electric Water Heater
- R-30 Rated Blown Roof Insulation

Exterior Features

- Durable Cement Vertical Siding With Hand-Painted Finish
- Attractive Shutter Treatments on Hitch End and Front Door Side
- Large White Vinyl Framed Dual-Paned Windows With Locks
- Residential Insulated Front Door With Deadbolt
- Residential 9-Lite Rear Door With Deadbolt
- Exterior Lights At Front and Rear Doors
- 6" Roof Side Eaves on Sidewalls and 12" Front and Rear Overhangs
- 1 Exterior GFCI Electric Outlet

Interior Features

- Linoleum Hard-Surface Floor Covering, Including Entryway
- FHA Approved Carpet and Pad Available In Many Colors
- Dining Room Chandelier, Bedroom Ceiling Lights and Bath Vanity Lights
- Vaulted Ceilings with Residential Concealed Ridge Beam and Knockdown Textured Finish Throughout
- Taped and Textured Interior Walls Throughout Home
- Residential raised panel Interior Passage Doors, Mortised With 150lb Hinges & Lever Handles
- 5/8" Thick Interior Door Jambs With Profiled Door Casing
- Upgrade Drapery Valances With Aluminum Mini Blinds
- Wood Closet Shelving And Poles Wardrobes and Closets
- Decorator Style Electrical Receptacles and Silent Switches

- 5 Can Lights In Kitchen
- Rounded T&T Window Corners Throughout
- Semi-Gloss White Interior Paint
- Ceiling Fan Ready In Living Room, Master Bedroom, and Family Room (if applicable)

Kitchen, Bath & Bonus Room Features

- 39" Tall Kitchen Overhead Cabinets With Finished Interiors, Adjustable Shelves and Crown Cabinet Moulding
- Hardwood Cabinet Doors With Concealed, Adjustable Hinges
- City-Scape Overheads in Kitchen
- Drawer over Door Cabinet Construction in Kitchen with Steel Drawer Guides
- Pull-Out Trash Cabinet in Kitchen
- (2) Pot/Pan Drawers in Kitchen
- Trim Bath Mirrors
- High-Pressure Laminate Countertops, Available In Several Colors
- Single Row Ceramic Tile Backsplash throughout
- Crescent Countertop Edging Throughout
- 6" Marble Window Sill in Kitchen
- Elegant Deep White Composite Kitchen Sink With Single Level Faucet
- 16 Cubic Foot Double-Door, Frost-Free Refrigerator
- 30" Free-Standing Gas Range
- Utility Overhead Shelf Over Washer and Dryer Area In Bonus Room
- 36" High Bath Lavies
- Single Lever Faucets on Bath Lavies, Tubs and Showers (N/A on Oval Tub)
- Oval Drop-In Tub and Separate Fiberglass Shower w/ Glass Door In Master Bath (As Shown On Brochure)
- One-Piece Fiberglass Tub/Shower In Main Bath(s)
- Elongated Water Saver Commodes
- Medicine Cabinets, Towel Bars and Tissue Holders In Baths

Popular Options

- 2 x 6 Exterior Walls With R-19 Insulation
- Roof Insulation Upgraded to R-35 or R-40 (N/A On Singlewides)
- Roof Dormer and Upgraded Siding
- Oil Rubbed Bronze Package Décor Package
- Upgrade Ceiling Cove, Baseboard and Door Molding Package
- Gas or Wood Burning Fireplaces
- Premium Carpet In Several Styles and Colors
- Upgraded Hardwood Face Frames
- Upgrade Solid Surface Counter Tops & Splashes
- Premium Refrigerators and Ranges
- Dishwasher and "Space-Saver" Microwave
- Ceiling Fans and Upgrade Lighting
- Skylights In Kitchen and Baths

Your Cavco West Retailer:

IMPORTANT: Because we continuously update and modify Cavco products it is important for you to know that our brochures and literature are for illustrative purposes only. All information contained herein may vary from the actual home we build. Dimensions are nominal and length and width measurements are from exterior wall to exterior wall. The right is reserved to make changes at any time, without notice or obligation, in prices, colors, materials, specifications, features and models. Please check with your retailer for specific information about the home you select. (Add approximately four feet to determine transportable length.) ©2010 Cavco Industries, Inc. | All Rights Reserved | www.cavco.com

Cavco West offers hundreds of Manufactured Homes, Park Models, Cabins and Commercial Building floor plans. Talk with your Cavco West retailer for more information.

